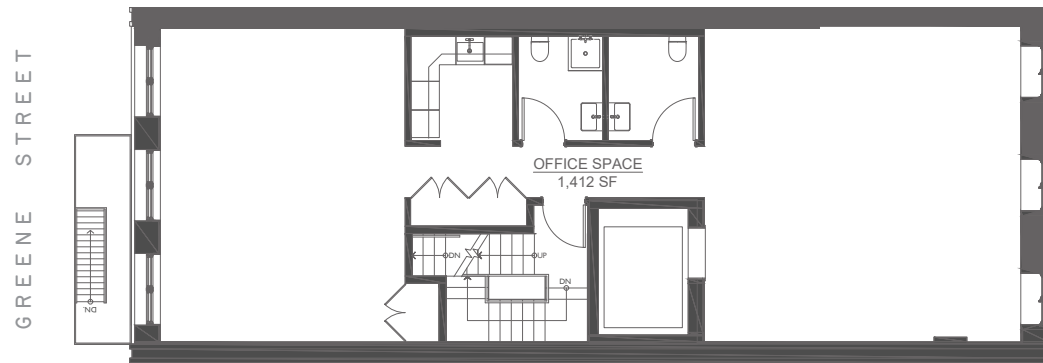


COMMERCIAL LEASING - OFFICE - 1,412 SF

52GREENESOHO.COM



Second Floor

GROSS AREA:	1,613 SF
USABLE OFFICE AREA:	1,412 SF
ELEVATOR/STAIRWELL:	201 SF
RENTABLE OFFICE AREA:	1,716 SF

52 GREENE STREET, NEW YORK, NY 10013

*Dimensions and layouts are approximate, subject to field variances, and intended for marketing purposes

